



TAUNOTENT

Fitment applies to a TOYOTA double cab with and without a roll bar.

FITMENT INSTRUCTIONS



TONNEAU
COVER

This fitment applies to a Toyota Hilux Double cab clip on with and without roll bar.

TOYDCCLIP

Thank you for choosing our product. Please adhere to these instructions as closely as possible. Always ensure all safety equipment is used and that a safe working environment is established.

TOOLS:

The only tools required are:

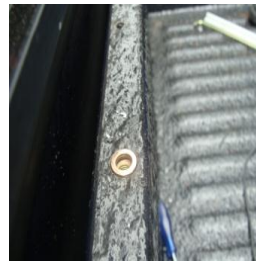
- Rivet nut gun
- Screw driver

KIT COMPRISES:

- 1x Tonneau cover
- 2x Support braces
- 4x Support clips
- 1x Front rail
- 3x Rivnuts with 3x screws and nuts.
- 2x Side rails, with plastic plugs
- 1x Back rail
- 2x Plastic back corners with 4x hand screws
- 4 x G clamps and high leveling screws

INSTRUCTIONS FOR FITMENT

1) Put the aluminum slide rail on the top edge of the load body, beneath the window. If there is rubberizing blocking the bolt holes, use the rail to locate the position and clean out the rubber using a blade. The shorter lip of the rail to be positioned towards the cab. Insert rivet nuts into holes and then using screws, attach rail to edge.



2) Fasten the two side rails using 2x clamps per rail. The plastic caps must sit flush with the front outside edge of the aluminum rail which just has been attached. See Picture



Should you experience any problems in fitting please do not hesitate to call us on 0861 82 8668

3) Insert support braces into bow clips ensuring they are equally spaced along the length of the load box. Slide cover into front rail and close velcro around roll-bar and then pull cover towards tailgate.



4) Line up all the chips at tailgate first and then push them all down so that they clip into the rail. Do the same on the two sides. Pull the corners snugly over the plastic corners using the tabs. When removing the cover start by lifting up the tabs to loosen the chips.



- 5) The tailgate can open and close with the cover fitted.
6) The cover can be rolled to the front and fastened using the straps.
7) Should any part of the kit be lost or broken they can be purchased separately

Retighten clamps and hand screws regularly as they tend to open while traveling



Should you experience any problems in fitting please do not hesitate to call us on 0861 82 8668