



TAUNOTENT

FITMENT INSTRUCTIONS



These fitment instructions apply to:
Ford Bantam

Clip-on Kit to fit without
cab protector

Thank you for choosing our product. Please adhere to these instructions as closely as possible. Always ensure all safety equipment is used and that a safe working environment is established.

TOOLS:

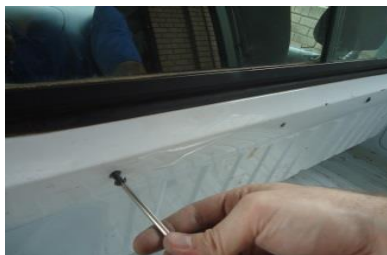
Tools required: screwdriver.

KIT COMPRISES:

- 1x Tonneau cover
- 2x Support braces
- 4x Support clips
- 4x G-clamps with hand screws
- 1x Front rail
- 1x Front mount brackets
- 9x Screws
- 9x Nuts and bolts with washers
- 4x bolts
- 2x Side rails with plastic end caps
- 1x Back rail
- 2x Plastic back corners with
- 4x turning screws

INSTRUCTIONS FOR FITMENT

1) Remove the screws in front of the vehicle then line up the bracket on either side to correspond with these holes and secure rail with 5 x screws provided. The shorter lip of the rail to be positioned away from the cab. Using screws, attach rail to edge.

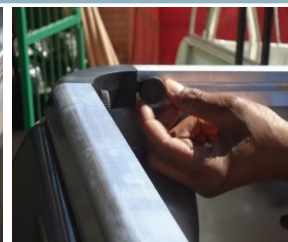


2) Fasten the two side rails using 2x clamps per rail. The plastic caps must sit flush with sides of the front mounting brackets for the aluminum slide rail.

3) At the front of the front rail mounting bracket (see arrows in pic on top right) use a clear (vehicle is not rubberised) or black silicon (vehicle is rubberised) and apply where necessary in front to ensure a water tight fit.



3) Install the rear rail by pushing the ends of the plastic corners into the open ends of the side rails. Fasten into place by turning screws as tightly as possible



4) Insert support braces into bow clips ensuring they are equally spaced along the length of the load box. Slide cover into front rail and then pull cover towards tailgate.





TAUNOTENT

FITMENT INSTRUCTIONS



TONNEAU
COVER

These fitment instructions apply to:
Ford Bantam

Clip-on Kit to fit
without cab protector

Thank you for choosing our product. Please adhere to these instructions as closely as possible. Always ensure all safety equipment is used and that a safe working environment is established.

INSTRUCTIONS FOR FITMENT *CONTINUED*

6) Line up all the chips at tailgate first, and push them all down at once so that they clip into the rail. Do the same on the two sides. Pull the corners down using the tabs. When removing the cover start by lifting up the tabs to loosen the chips



7) The tailgate can open and close with the cover fitted.

8) The cover can be rolled to the front and fastened using the straps.

9) Should any part of the kit be lost or broken they can be purchased separately .



Retighten clamps and hand screws regularly as they tend to open while traveling

Should you experience any problems in fitting please do not hesitate to call us on 0861 82 8668