



TAJNOTENT

INSTRUCTIONS FOR FITMENT



These fitment instructions apply to:
ISUZU: 2013 SINGLE CAB TIE ON TONNEUA KIT

Standard with
and without
roll-bar

Model No.
2013

Thank you for choosing our product. Please adhere to these instructions as closely as possible. Always ensure all safety equipment is used and that a safe working environment is established.

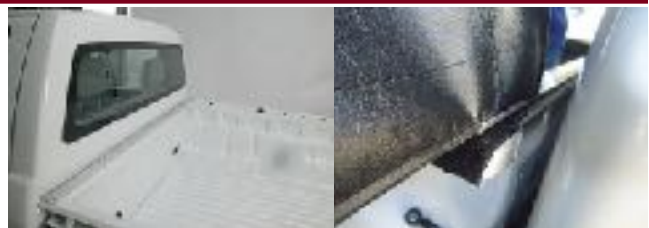
TOOLS:

Electric Drill, 4.5mm steel drill bit, extension cord, pop-rivet gun, tape measure, pencil, all appropriate safety equipment and all parts provided in the tonneau kit.

Note: After any holes are drilled apply rust inhibitor (provided) before any screws or rivets are fastened

1. Before commencing fitment, check the contents of the kit and ensure it is the correct cover for your bakkie by laying it over the load-body and ensuring it fits correctly.

2. Place the aluminium rail on the front of the load-body and secure by drilling 4 equally spaced holes into the aluminium rail and load-body. Secure using self drill screws provided. Note the orientation of the aluminium rail.



3. Drill and fit the bobbins with pop rivets provided approximately 4cm down from the top of the load box and 8cm across from the tail gate as seen in picture on right. Please note that after drilling has taken place always coat the drilled hole with the rust inhibitor provided.



4. Drill and fit the triangular hook with pop rivets provided which must be fitted exactly in the center of the tail gate, just below the slope of where the flat part of the tailgate begins as seen in picture on right. Please note that after drilling has taken place always coat the drilled hole with the rust inhibitor provided.



5. Fit the 6 x bow-clips for the support brace with the self drill screws provided. These clips are fitted onto the inner part of the load-body and their positioning must correspond in the center of the sleeve stitched under the tonneau cover where the support brace slides through.



6. Lastly, saddle hooks have to be fitted, these 2 hooks ensure the elastic in the cover is pulled tight and the cover fits snug. Two holes must be drilled as far forward as possible from the front side of the load body as shown.



Once fitted the cover should fit tight and secure. Check that the elastic is pulled tight and that the support brace is inserted and working correctly. Only use a mild soap when cleaning your cover. Thank you for your purchase, we hope it meets your requirements adequately.